

Early Underground Mining

Written by J Harold Utley
Tuesday, 07 April 2009 09:00



Early Underground Mining in Hopkins County by J Harold Utley Hopkins County KY

Historian. Little is known of the early history of Hopkins County except that in 1775 Colonel Richard Henderson, in the name of his company, Transylvanian Land Company, bought what is now Hopkins County from the Cherokee Indians. The Commonwealth of Virginia passed laws nullifying his treaty with the Indians. As compensation for his efforts Virginia gave him 10,000 acres of land in what is now Henderson County.

After Henderson County was created from part of Christian County, Hopkins County was created from the southern part of Henderson County.

The early settlers took little notice of the presence of coal as the first coal used in Madisonville was brought from Pittsburgh in a barrel. The coal was burned in a grate in the Weir and Wilkins store in the area now occupied by the Court House Annex.

The earliest use of local coal was by Jack Woolfolk, a blacksmith from Hall's Post Office (Earlington). He discovered the outcrop of the No 11 coalbed in Hunting Branch. He took some to his shop and discovered that coal heated his forge much hotter than wood. Coal possibly had been mined previously from "house coal" mines along a coal outcrop for home heating or trading.

Early Underground Mining

Written by J Harold Utley

Tuesday, 07 April 2009 09:00

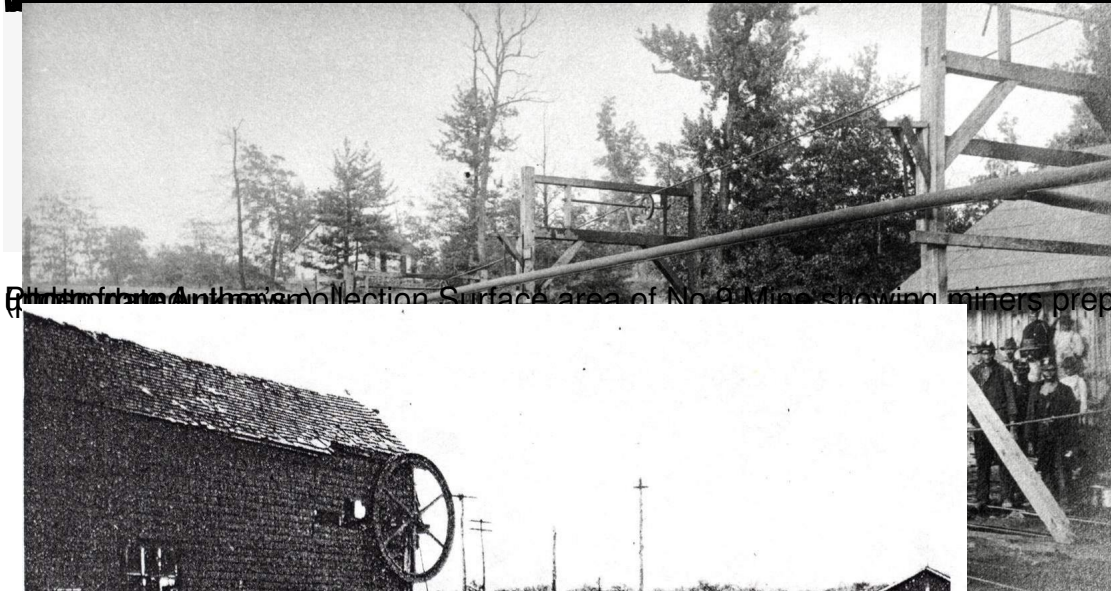
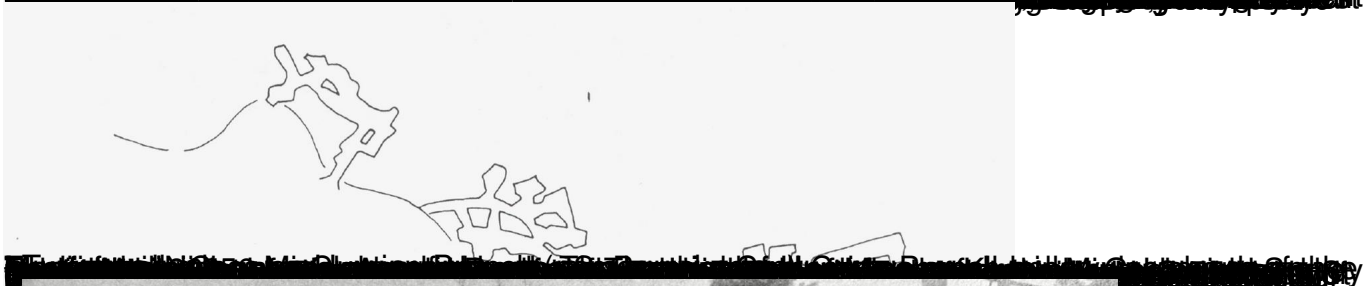


Photo from Anthracite collection Surface area of No. 9 Mine showing miners preparing to go

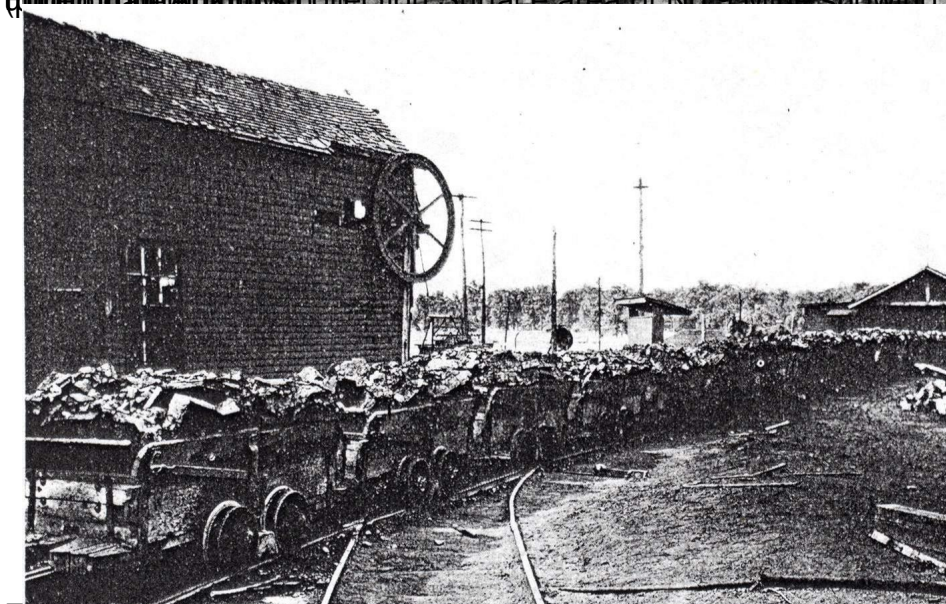


Photo from Anthracite collection Surface area of No. 9 Mine showing miners preparing to go

Early Underground Mining

Written by J Harold Utley

Tuesday, 07 April 2009 09:00

5	Form 8.	5
5	Let	5
5	HAVE	5
5	FIFTY CENTS	5
5	<i>In Merchandise—St. Charles Mines.</i>	5
5	ST. BERNARD COAL CO.	5
5	Date, 1883. Per	5

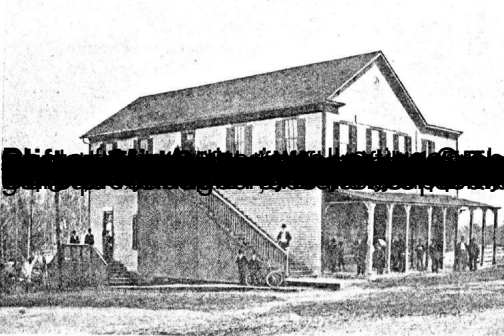
From Author's print collection St Charles Mine script for use in company store



From Author's print collection Coal tipples at Hecla, Michigan, 1889

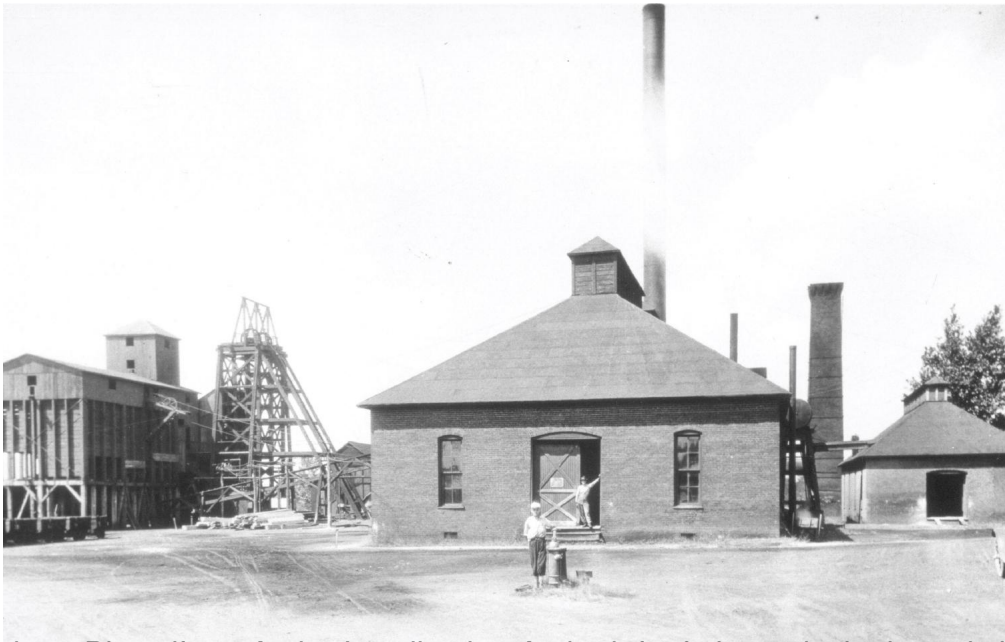


Photo from Author's collection Oaktree Tipples at Ilseley



Early Underground Mining

Written by J Harold Utley
Tuesday, 07 April 2009 09:00



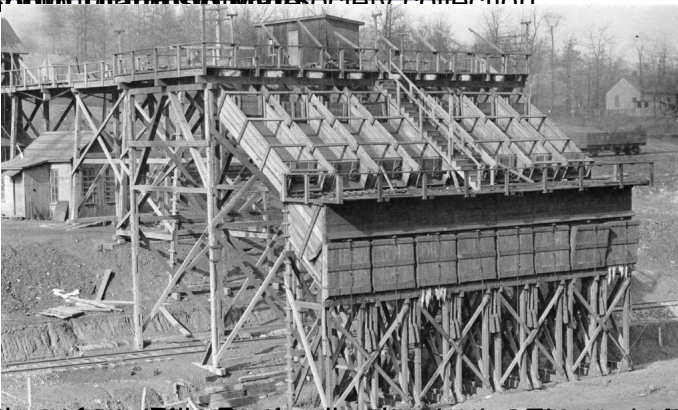
ELI ANDERSON, 1890s. The brick building is the headframe of the mine. The wooden structure is the mine entrance.



Author: William Wilson. On the right is the headframe of the mine. The train is passing in front of it.



Shown from the Mine Society collection



Author: William Wilson. On the right is the headframe of the mine. The train is passing in front of it.

Early Underground Mining

Written by J Harold Utley
Tuesday, 07 April 2009 09:00



Arnold Mine located NE side of Earlinton

Arnold Mine located NE side of Earlinton, Kentucky (1900s)
<http://isurfhopkinsco.com>